



# Interceptor Waste and Drainage



**Cost-effective management of  
your interceptors and surface  
water drainage systems**

Protecting your assets. Protecting the environment.



Organisations who fail to take appropriate precautions to avoid a pollution incident from surface water drainage will be penalised accordingly

## Andel provides a range of customer-focused services to avoid the costly consequences of pollution from surface water drainage

With many years of experience in this specialised field, Andel has become a recognised market-leader in the management and servicing of underground interceptor waste tanks, separators and surface water drainage systems.

Pollution poses a significant legal, environmental and financial risk to any company or organisation with a hard standing area. Environment Agency guidelines state that any areas which catch rainfall and have significant vehicle traffic or fuelling facilities must have an oil separator installed to avoid surface water drainage polluting the environment. Andel provides regular servicing and support to numerous organisations throughout the UK with fuel interceptors and oil separators as well as providing CCTV drainage surveys, site surveys and drainage water sampling.

All Andel products and services are fully compliant with Environment Agency guidelines.

Interceptor tanks trap oil entering surface water drainage systems. They are essential for protecting the environment and preventing pollution from fuel and oil and its costly consequences. It is also essential that interceptor tanks are installed correctly and are regularly serviced and maintained.

**In 2005 a national haulage company was successfully prosecuted and fined £20,000 plus costs for causing environmental damage. A leaking oil tank had polluted a nearby river with over 5,000 litres of diesel which cost the company an additional amount in excess of £1.6M in clean-up costs.**

Andel can inspect, service, empty, install, commission and supply all types of oil separators and petrol interceptors as well as supply alarm systems and spill control products.

**You can rest assured that with Andel you will have the products, expertise and services to maintain your interceptor waste tanks and drainage systems and keep you protected from the risk of environmental incidents and the costly consequences.**

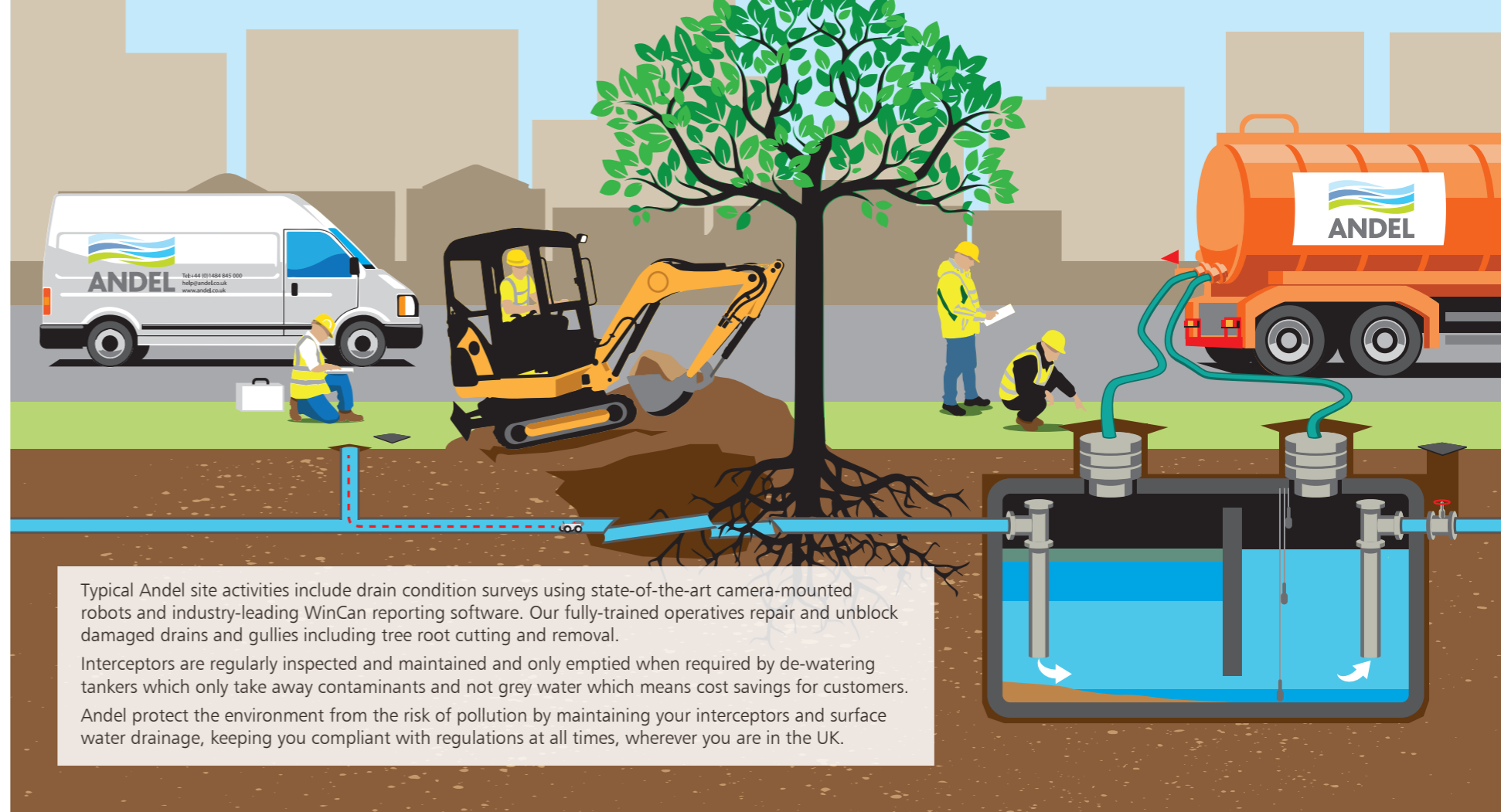
### Interceptor and drainage inspections

Environment Agency guidelines state that interceptors should be inspected regularly with a major structural survey every five years.

Andel provides a comprehensive and cost-effective service for underground interceptors and related surface water drainage. Our engineers are trained to carry out their work to the highest standards, including interceptor commissioning, emptying, filter changing and confined space entry.

We inspect and certify, we carry out full drainage trace surveys and mapping (as required by the emergency services) as well as drain condition surveys using state-of-the-art robot-mounted cameras and WinCan industry-leading reporting software.

Andel inspections coupled with the monitoring of



interceptor alarm equipment and auto-closure devices will eliminate the risk of a pollution incident and will give early warning of any potential problems.

Our team of fully-trained operatives will carry out any remedial work needed, such as repairing and unblocking damaged drains and gullies including tree root cutting and removal.

### Interceptor installation and commissioning

Andel provides a full interceptor tank installation and commissioning service. For interceptors that have been installed by a third party we check that all aspects of the installation have been undertaken correctly:

- Ensuring the interceptor is watertight
- Inspection of the filter to ensure security and positioning is correct
- Inspection of the alarm system and auto-closure devices
- Calibration of the oil layer thickness probe
- Inspection of the chambers for any sign of silt.

### Interceptor management

We provide a highly cost-effective and friendly service, focusing on inspection first, avoiding where possible, the use of expensive tankers if not required – we tailor the service to suit the need.

If an interceptor needs emptying, we use de-watering tankers that only take away contaminants and not grey water. Unlike many other operators, Andel's tankers are equipped to extract the contents of the tank on site, separate the water from the oil, silt and any other impurities and return the grey water to the tank.

### Customer benefits of Andel's interceptor emptying service:

- Because we are not carrying grey water around in our tankers, we are able to cover several sites in one day – offering a lower cost to customers
- Because we are refilling the interceptor with the filtered water from the tanker – we avoid the costly and time-inefficient exercise of refilling the interceptor tank from the mains water supply – saving customers time and money as well as reducing the environmental impact
- Our mileage is reduced as we can avoid having to make repeat visits to waste disposal sites – reducing costs and reducing diesel emissions from our tankers.

Andel has many satisfied customers who rely on us to maintain their interceptor tanks and surface water drainage systems.

We ensure that Andel customers receive the best and most cost-effective service and are always compliant with all the relevant environmental legislation.



# ANDEL

Protecting your assets. Protecting the environment.

## Interceptor Waste and Drainage – working with some of the largest public and private organisations in the UK for a quarter of a century:

Manchester Airport  
Newcastle Airport  
Leeds Bradford Airport  
Robin Hood Airport  
Bouygues  
Carillion  
CBRE  
Engie  
Interserve  
ISS  
SITA  
Skanska  
Sodexo  
Arriva  
Addenbrookes Hospital  
Central Manchester NHS  
East Cheshire NHS  
Greater Glasgow & Clyde NHS

Hammersmith & Charing Cross  
NHS  
Worcestershire Royal Hospital  
Gloucester PCT  
2gether Trust  
University of Derby  
Keele University  
University of East Anglia  
University of Warwick  
Leeds Metropolitan University  
Leeds Beckett University  
North Wales Police, Fire and  
Rescue  
Leicestershire Police  
Nottinghamshire Police  
West Yorkshire Police  
Lancaster Fire and Rescue  
Mersey Fire & Rescue  
SEESA



**For more information call  
Andel on +44 (0)1484 845 000**

Head Office: Andel Ltd, New Mills,  
Brougham Road, Marsden, Huddersfield,  
West Yorkshire HD7 6AZ

**[www.andel.co.uk](http://www.andel.co.uk) [help@andel.co.uk](mailto:help@andel.co.uk)**